

# Elite Bath

## WALL MOUNT FAUCET

### INSTALLATION INSTRUCTIONS

#### BEFORE YOU BEGIN

- Turn off the main water supply
- Observe all local plumbing and building codes

#### SUGGESTED TOOLS AND MATERIALS



Adjustable Wrench



Teflon Tape



Hex Wrench

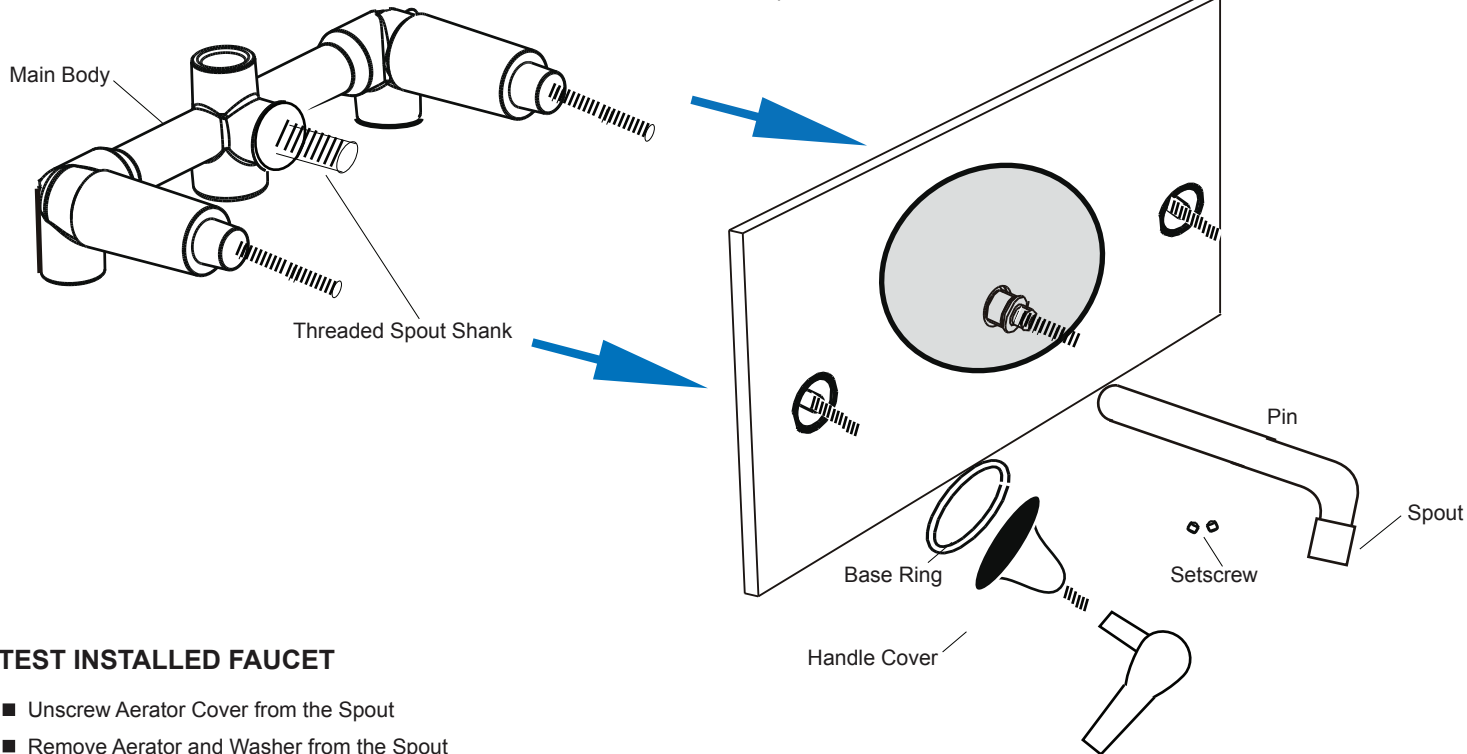


Channel Lock

#### INSTALL THE LAVATORY FAUCET

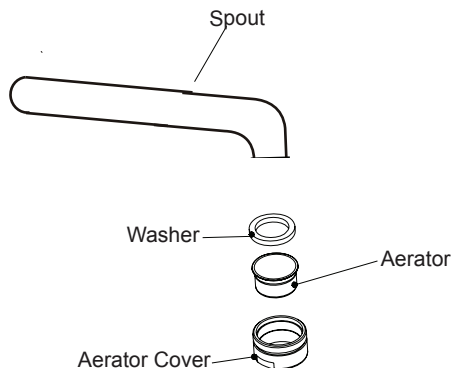
**Important!** Use care when installing the wall mount faucet to avoid scratching the finish.

- Set the Medallion over threaded spout shank.
- Use silicon adhesive to bond medallion to wall.
- Screw faucet spout to medallion. Use teflon tape to make water tight connection.
- Place base ring , screw handle cover over faucet valves.
- Lock faucet handle in place with hex wrench , set screws



#### TEST INSTALLED FAUCET

- Unscrew Aerator Cover from the Spout
- Remove Aerator and Washer from the Spout
- Turn ON faucet for two minutes to flush water lines thoroughly. Debris in the water can damage the Cartridge causing it to leak.
- Replace Washer and Aerator to the Spout
- Replace Aerator Cover to the Spout



#### CARE INSTRUCTIONS

To keep your new faucet looking new, please follow these simple care instructions

- DO:** Simply rinse the faucet clean with clean water and mild soap  
Dry the faucet with a soft cotton cloth  
Use renaissance paste wax to preserve finish.
- DON'T:** Do not use any abrasive cleaners, cloths or paper towels.  
Do not use any cleaning agents containing acids, polish abrasives or harsh cleaner or soap